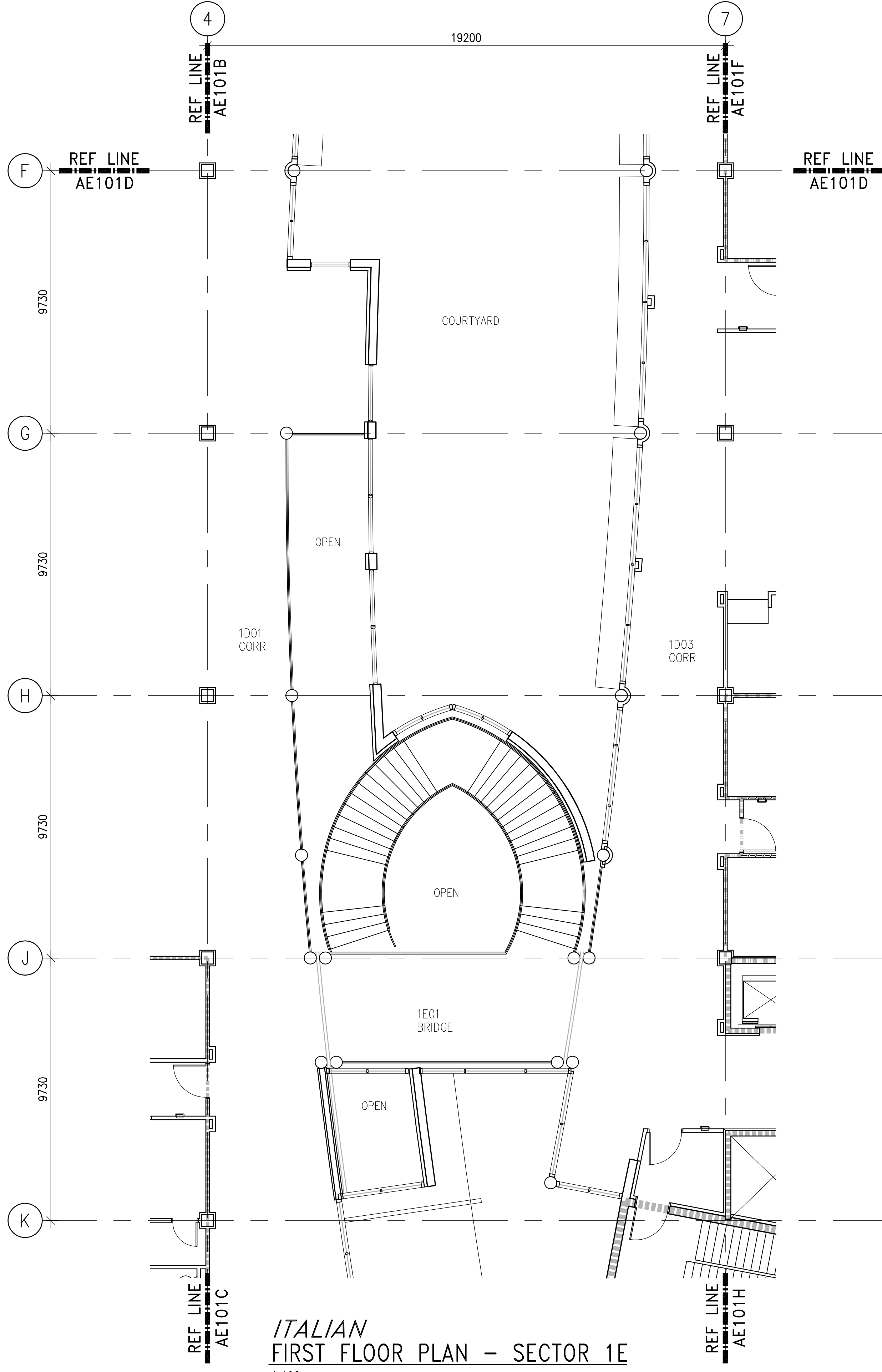


1 2 3 4 5

D  
C  
B  
A



**ITALIAN**  
**FIRST FLOOR PLAN - SECTOR 1E**  
1:100

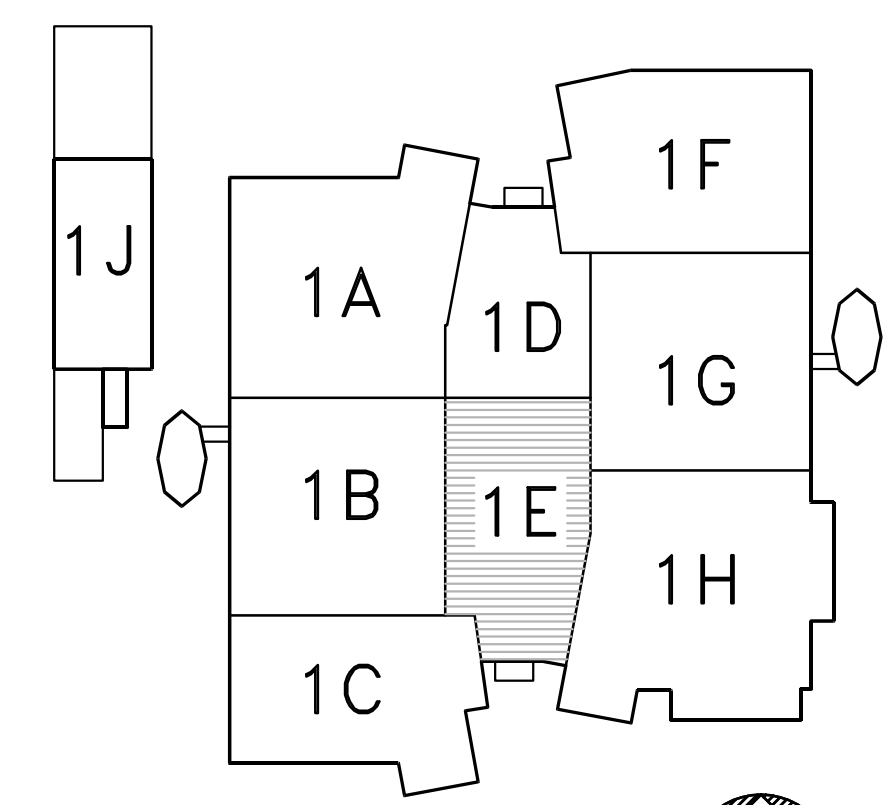
**NOTE:**

- NOTE DEL FOGLIO:  
1. XXX
- NOTE DI RIFERIMENTO:  
① XXX
- NOTE DEI MATERIALI:

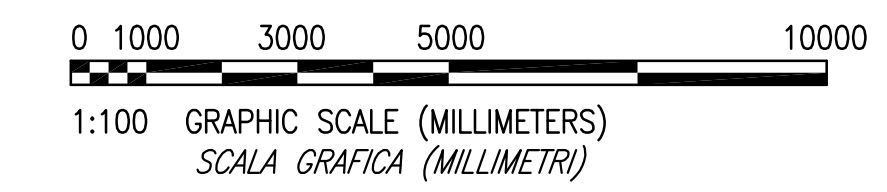
**NOTES:**

- SHEET NOTES:  
1. XXX
- KEY NOTES:  
① XXX
- MATERIAL NOTES:

RATED PARTITION LEGEND	
--- --- ---	SMOKE RESISTANT CORRIDOR PARTITION
//// //// ////	SMOKE RATED PARTITION
..... ..... .....	30 MIN FIRE RATED PARTITION
..... ..... .....	60 MIN FIRE RATED PARTITION
..... ..... .....	90 MIN FIRE/SMOKE RATED PARTITION
..... ..... .....	120 MIN FIRE RATED PARTITION
..... ..... .....	120 MIN FIRE/SMOKE RATED PARTITION



**KEY PLAN**  
**ENHANCED HEALTH SERVICE CENTER**  
**PIANTA DI RIFERIMENTO**



**NOTE: /NOTA:**  
IF THIS DRAWING IS LESS THAN 838.2 X 558.8mm  
IT IS A REDUCED SIZE DRAWING.  
*SE QUESTO DISEGNO E' PIU' PICCOLO DI 838.2 X 558.8mm  
E' UN DISEGNO A DIMENSIONI RIDOTTE.*

DATE	APPR
DESCRIPTION	SYN
<b>RLF</b> Architecture • Engineering • Interior Design	
APPROVED	SEAL
ACTIVITY - SATISFACTORY TO	
APPROVED	
FOR EFD FOR COMMANDER NAVFAC	
DATE	
A/E	EFD
DESIGN	
DRAWN	
REVIEW	
QC	
RWL	CHIEF ARCH/ ENGR.
PROJECT MANAGER	
FIRE PROTECTION	
BRANCH MANAGER	
DESIGN DIRECTOR	
DEPARTMENT OF THE NAVY	NAVAL FACILITIES ENGINEERING COMMAND
ATLANTIC DIVISION	NORFOLK, VIRGINIA
CAMP EDERLE	VICENZA, ITALY
ENHANCED HEALTH SERVICE CENTER	
FIRST FLOOR PLAN - SECTOR 1E	ITALIAN TITLE
CODE ID. NO. 80091	SIZE D
SCALE: 1:100	
EFD NO.	
STA. PROJ. NO. 2455	
SPEC. NO. 33050801	
CONSTR. CONTR. NO.	
N33191-05-R-0801	
NAVFAC DRAWING NO.	
SHEET ### OF	
<b>AE101E</b>	
DRAWFORM REVISION SEPT 2001	

1 2 3 4 5